



LIGHTING FOR **IMPACT**

Standard Media Player

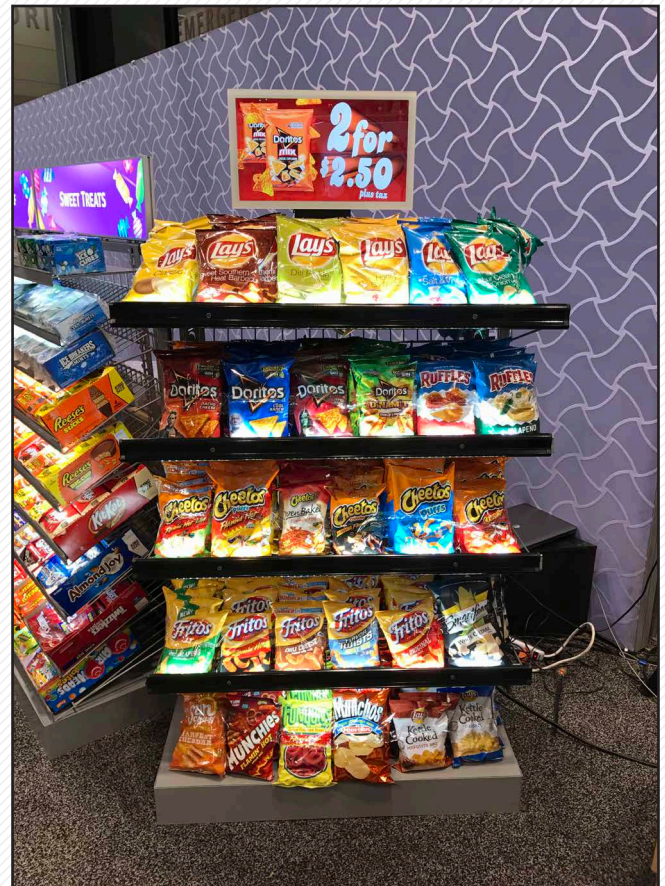
Improve shopper engagement with digital messaging right at the shelf. As LED lighting attracts shopper attention, our LCD displays engage the shopper once at the display – highlighting relevant, value-added content about new items, special promotions, or additional information about your assortments.

Especially designed for retail and commercial environments, all Lighting For Impact LCD screen options seamlessly integrate with our LED lighting and power components – this means they can be easily added to any end-cap or shelf and moved as needed to highlight featured merchandising.

Lighting For Impact offers varying screen sizes – from small on-shelf options at 7” to larger 32” end-cap options - fit your merchandising needs. Content / internal media is easily updated using intuitive USB auto-copy function.

Key Features

- Hardened protective glass screens are scratch resistant, easy to clean, and durable.
- Industrial metal casing surrounds and protects internal components.
- VESA and open frame mounting options offer flexibility in design and application.
- Customized color and logo options at higher quantities.



Contact us to discuss what option will work best for you.

844-218-4112 • lightingforimpact.com